

# Quick Guide

## Step 1

### Installation video guide

Scan the QR code and follow the video instructions for installation.



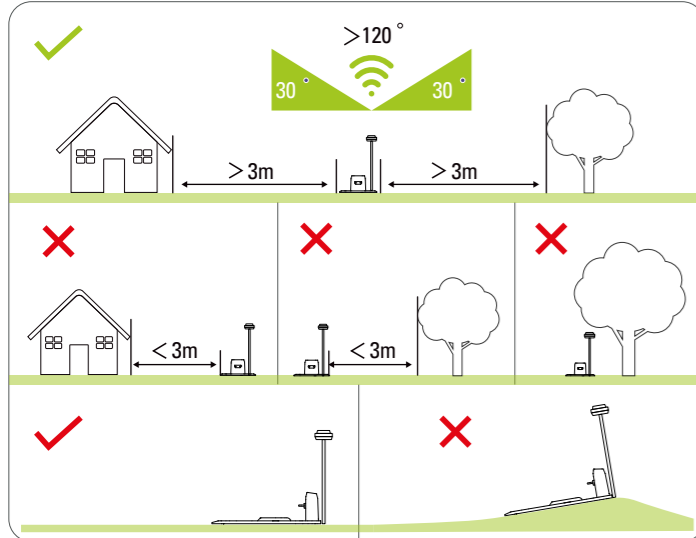
## Download the ANTHBOT APP

The ANTHBOT app can be downloaded from the Apple App Store or Google Play. Scan the QR code to download and install the ANTHBOT app. After downloading, open the app and follow the instructions. You will need to create an account when you log in for the first time.  
Note: Please ensure that the network connected to the device has a frequency of 2.4 GHz and that the app has the required access rights to location and network.



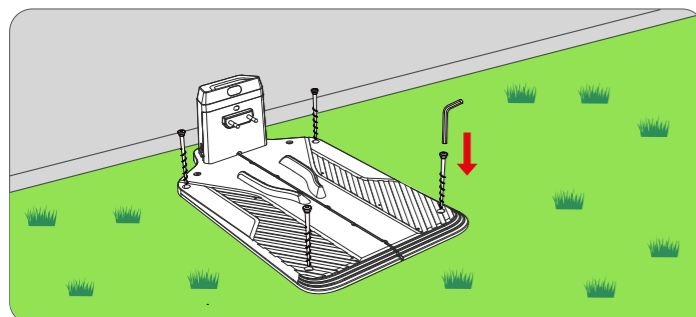
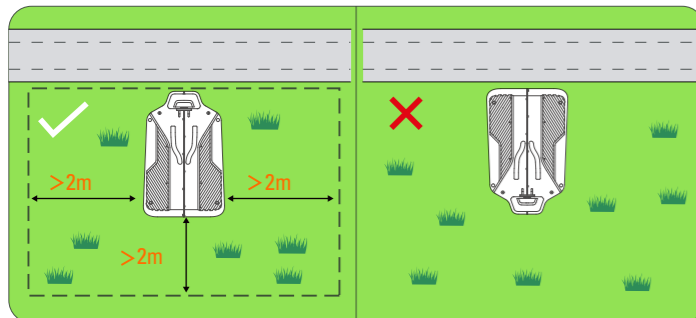
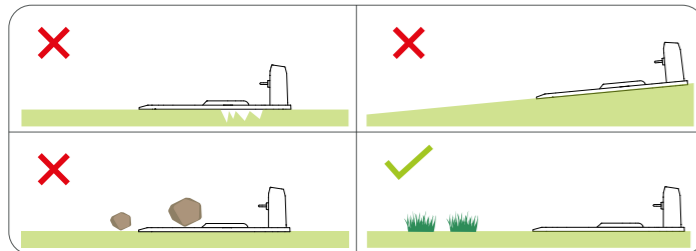
## Step 2 Find location

### 1 Find an unobstructed area



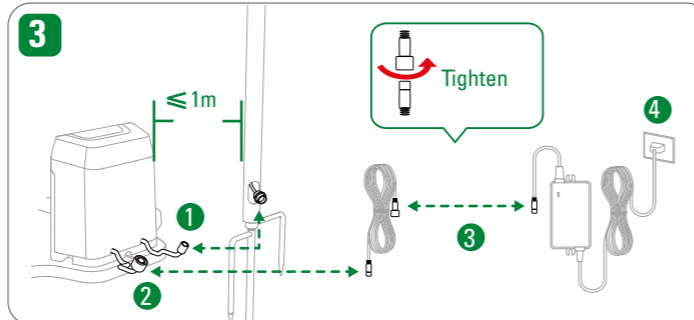
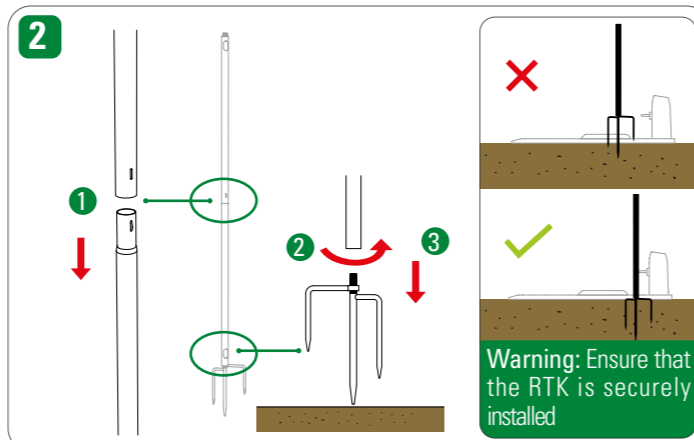
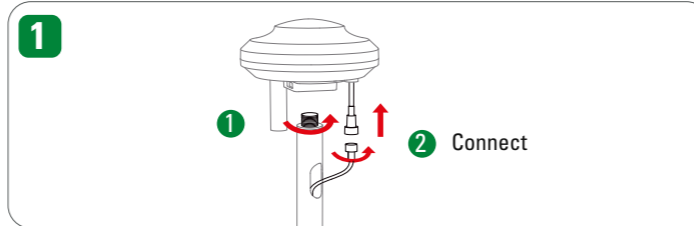
**Warning:** A strong Wi-Fi signal is required at the installation site!

### 2 Place charging station



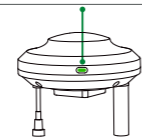
## Step 3 Installation

### Installation and power supply

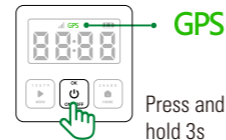


### Check signal lights

Connect a temporary power source, then check whether the LED is lit continuously.



Place the robot on the station and switch it on. When "GPS" lights up continuously on the display, the location has been registered. Registration may take approximately 3 minutes.

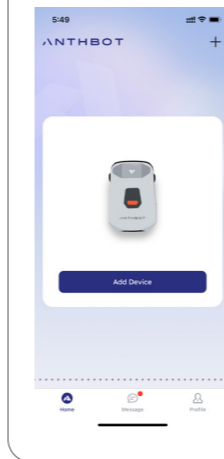


**Warning:** If the LED does not remain lit, the location is not suitable or there is a problem with the power supply. Find a new location and check the power supply if necessary.

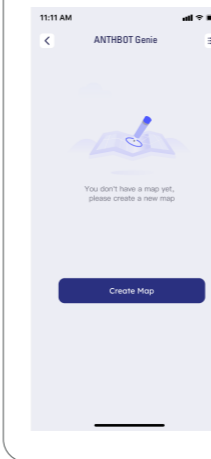
## Step 4 Operation

### APP operation

#### 1 Add device



#### 2 Create map



**Manual mapping:** Keep a distance of no more than 6 metres from the robot and use the remote control in the app to guide it along the desired boundary.



**Automatic mapping:** Only supports lawns with clear boundaries and enclosed areas.



#### 3 Start mowing



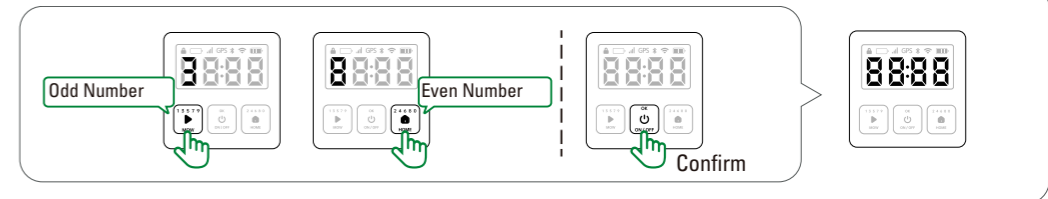
### Warning:

1. A map must be created before mowing. Mapping must be started from the station.
2. Before mowing, ensure that the LED on the RTK antenna is green and that the robot's GPS symbol is lit.
3. If the RTK base station is tilted or moved after the map has been created, the map must be recreated.
4. Define virtual restricted areas (e.g. for flower beds) before mowing.

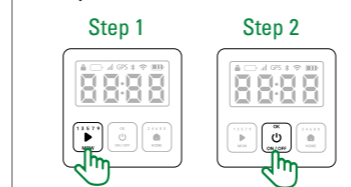
### Host operation

#### Unlock the mower

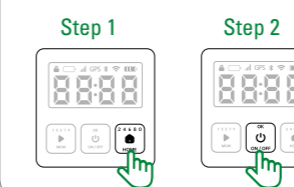
Enter the 4-digit PIN code to unlock the robot. The default PIN code is 0000. Press the OK button four times to confirm.



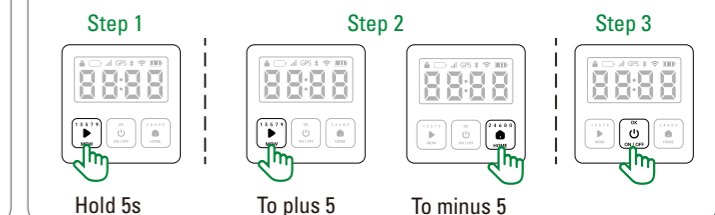
#### Start global mowing



#### Mower returns to the docking station



#### Adjust cutting height



Roboter Top 2000  
Robot Top 2000  
Art.Nr. 25899.01/108769



Hotline: 0848 000 120

LANDI Schweiz AG  
Schulriederstrasse 5  
CH-3293 Dotzigen  
www.landich.ch

# Kurzanleitung

## Schritt 1

### Installationsvideoanleitung

QR-Code scannen und Videoanweisungen zur Installation befolgen.



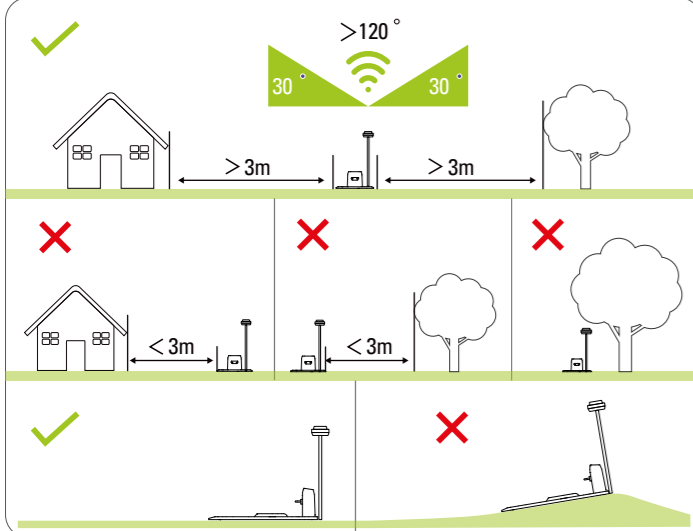
## ANTHBOT APP herunterladen

Die ANTHBOT-App kann aus dem Apple App Store oder Google Play heruntergeladen werden. QR-Code scannen, um die ANTHBOT App herunterzuladen und zu installieren. Nach dem Herunterladen die App öffnen und die Anweisung der App befolgen. Bei der Erstanmeldung muss ein Konto erstellt werden. Hinweis: Bitte stellen Sie sicher, dass das mit dem Gerät verbundene Netzwerk die Frequenz von 2,4 GHz hat und der App die geforderten Zugriffsrechte auf Standort und Netzwerk gewährt sind.



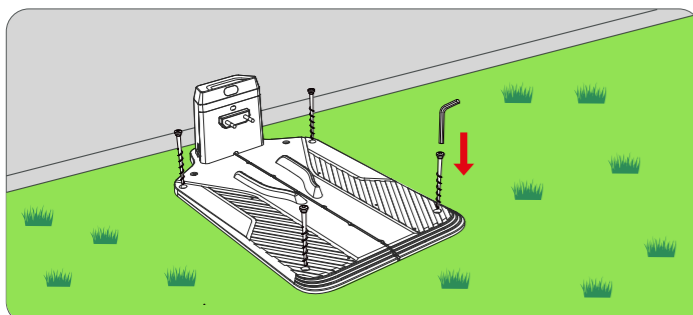
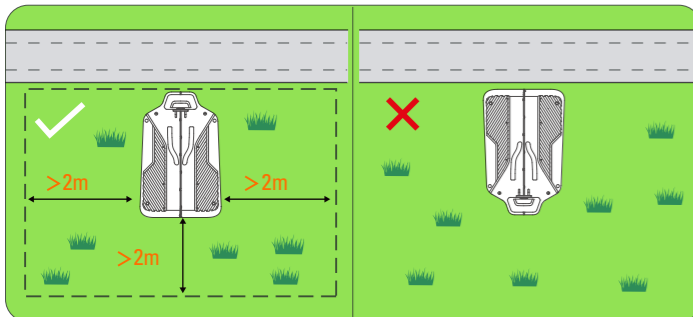
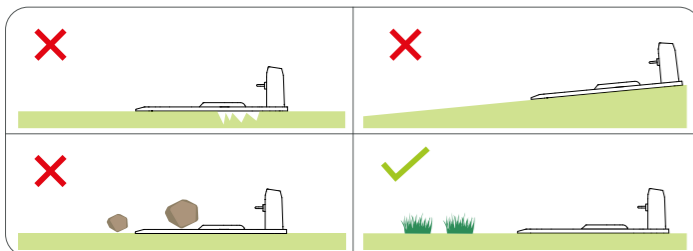
## Schritt 2 Standort festlegen

### 1 Installationsort auf einer freien Fläche



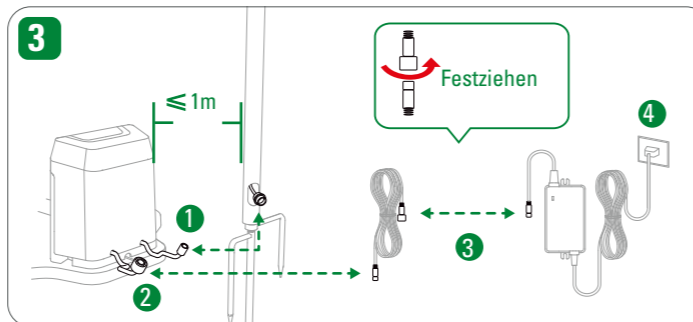
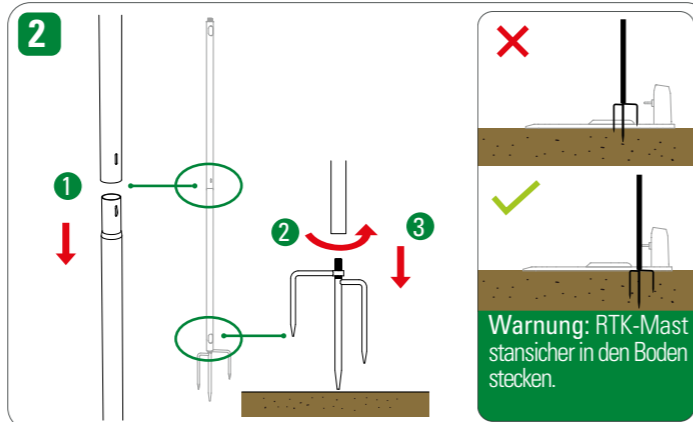
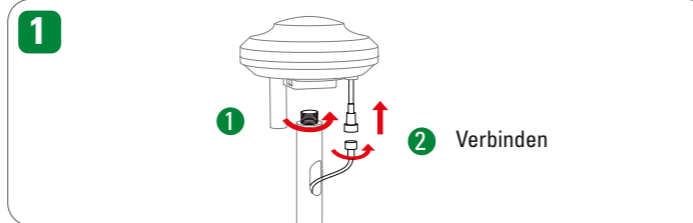
Warnung: Es wird am Installationsort ein starkes WLAN-Signal benötigt!

### 2 Ladestation positionier



## Schritt 3 Installation

### Installation und Netzanschluss



### Signalkontrollleuchte prüfen

Temporäre Stromquelle anschliessen, dann prüfen, ob die LED konstant leuchtet.



Roboter auf die Station stellen und einschalten. Wenn "GPS" auf dem Display konstant leuchtet, ist der Standort registriert. Die Registrierung kann ca. 3 Minuten andauern.

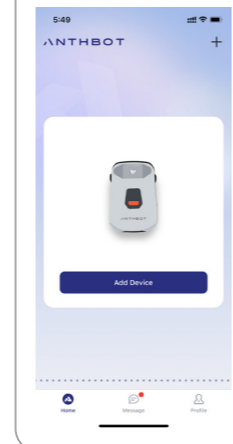


Warnung: Falls die LED nicht dauerhaft leuchtet, ist der Standort nicht geeignet oder es gibt ein Problem mit der Stromversorgung. Neuer Standort suchen und gegebenenfalls die Stromversorgung überprüfen.

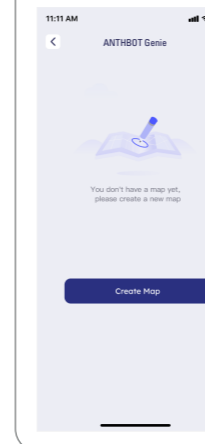
## Schritt 4 Betrieb

### APP-Betrieb

#### 1 Gerät hinzufügen



#### 2 Karte erstellen

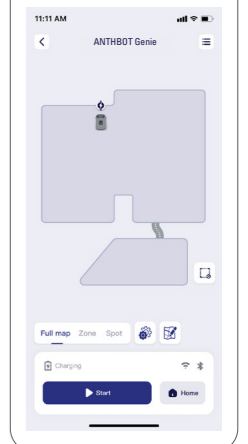


Automatische Kartierung: Unterstützt nur Rasenflächen mit klaren Begrenzungen und geschlossenen Bereichen.

Manuelle Kartierung: Halten Sie einen Abstand von maximal 6 Metern zum Roboter und steuern Sie ihn mittels der Fernbedienung in der App entlang der gewünschten Begrenzung.



#### 3 Mähen starten



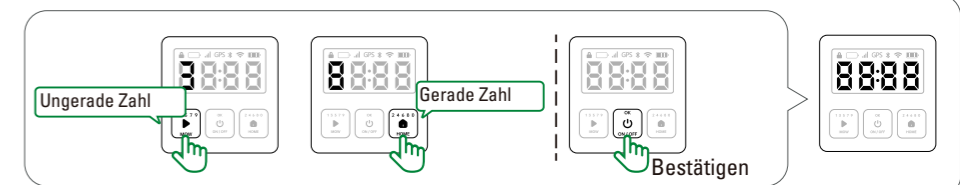
### Warnung:

- Vor dem Mähen muss eine Karte erstellt werden. Die Kartierung muss von der Station aus gestartet werden.
- Vor dem Mähen sicherstellen, dass die LED der RTK-Antenne grün leuchtet und das GPS-Symbol des Roboters leuchtet.
- Wenn die RTK-Basisstation nach der Kartenerstellung geneigt oder bewegt wird, muss die Karte neu erstellt werden.
- Virtuelle Sperrbereiche (z.B. für Blumenbeete) vor dem Mähen definieren.

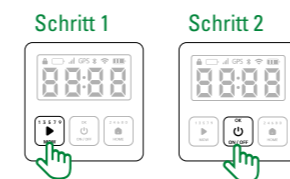
### Hauptgerät-Betrieb

#### Roboter entsperren

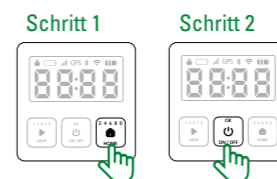
4-stelligen PIN-Code eingeben, um den Roboter zu entriegeln. Der Standard-PIN-Code ist 0000. Viermal die OK-Taste zur Bestätigung drücken.



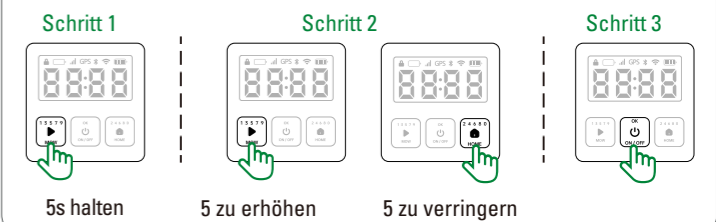
#### Globales Mähen starten Fehlerberichterstattung entfernen



#### Mähroboter zur Ladestation zurücksenden



#### SCN Schneidhöhe einstellen



Roboter Top 2000  
Robot Top 2000  
Art.Nr. 25899.01/108769



Hotline: 0848 000 120

LANDI Schweiz AG  
Schulriederstrasse 5  
CH-3293 Dotzigen  
www.landli.ch

# Guide rapide

## Étape 1

### Guide vidéo d'installation

Scannez le code QR et suivez les instructions vidéo pour l'installation.



## Télécharger ANTHBOT APP

L'application ANTHBOT peut être téléchargée depuis l'App Store ou Google Play. Scannez le code QR pour télécharger et installer l'application ANTHBOT. Une fois le téléchargement terminé, ouvrez l'application et suivez les instructions. Lors de la première connexion, vous devez créer un compte.

Remarque : assurez-vous que le réseau connecté à l'appareil fonctionne sur la fréquence 2,4 GHz et que l'application dispose des droits d'accès requis à la localisation et au réseau.

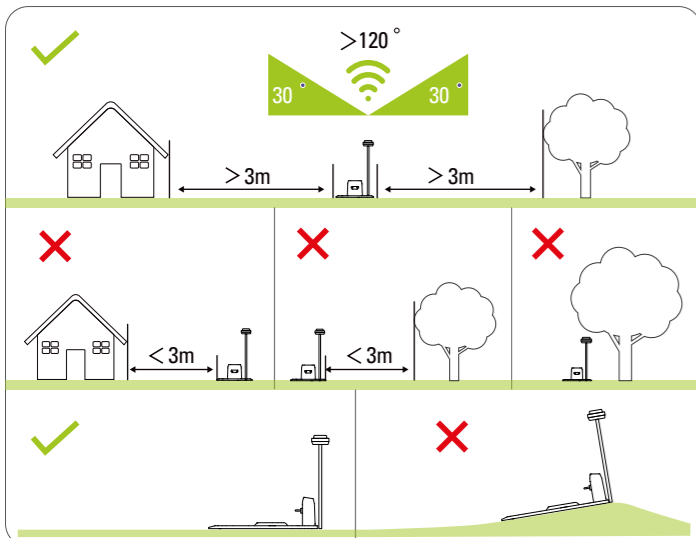


Télécharger dans l'App Store

GET IT ON Google Play

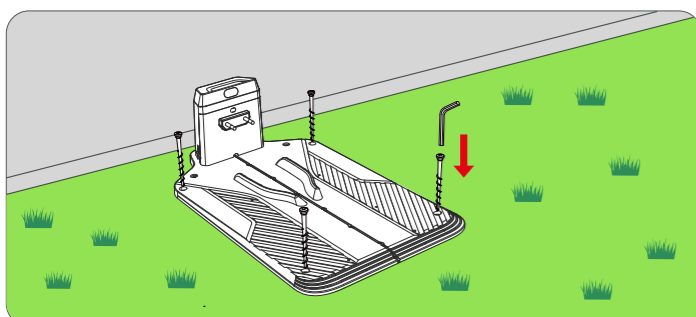
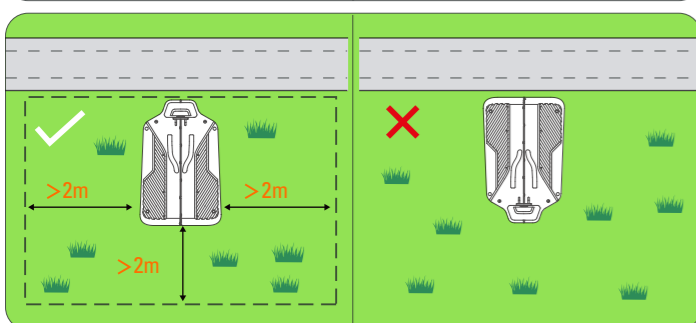
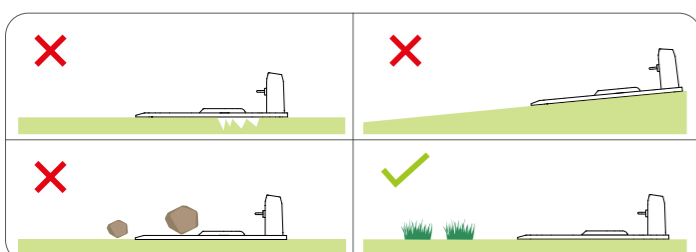
## Étape 2 Définir l'emplacement

### 1 Lieu d'installation sur une surface libre



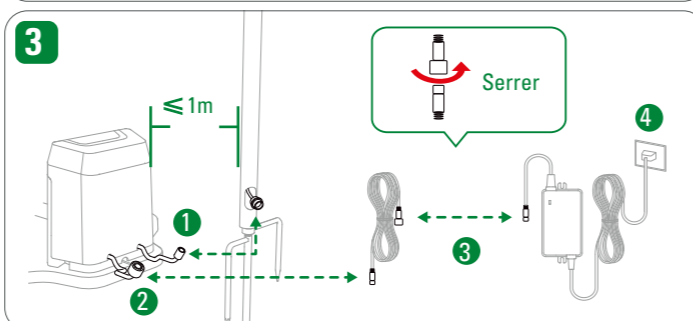
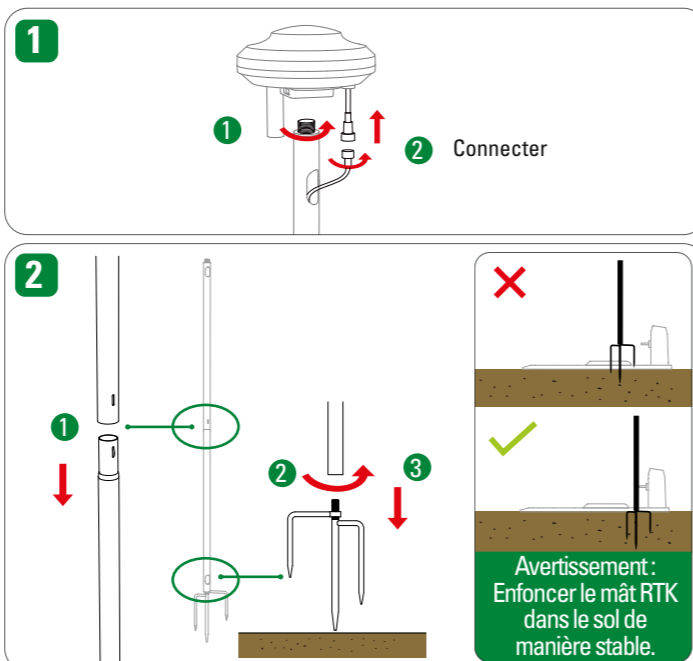
**Avertissement :** Un signal Wi-Fi puissant est nécessaire sur le lieu d'installation !

### 2 Installer la station



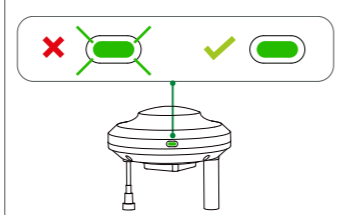
## Étape 3 Installation

### Installation et alimentation



### Vérifier le signal lumineux

Brancher une source d'alimentation temporaire, puis vérifier si la LED reste allumée en permanence.



Placez le robot sur la station et allumez-le. Lorsque « GPS » s'affiche en permanence à l'écran, l'emplacement est enregistré. L'enregistrement peut prendre environ 3 minutes.

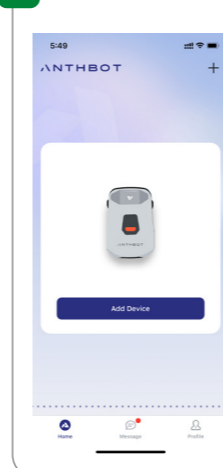


**Avertissement :** si la LED ne reste pas allumée en permanence, cela signifie que l'emplacement n'est pas adapté ou qu'il y a un problème d'alimentation électrique. Recherchez un nouvel emplacement et vérifiez l'alimentation électrique si nécessaire.

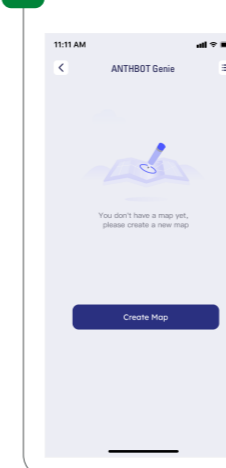
## Étape 4 Opération

### Fonctionnement de l'APP

#### 1 Ajouter le robot

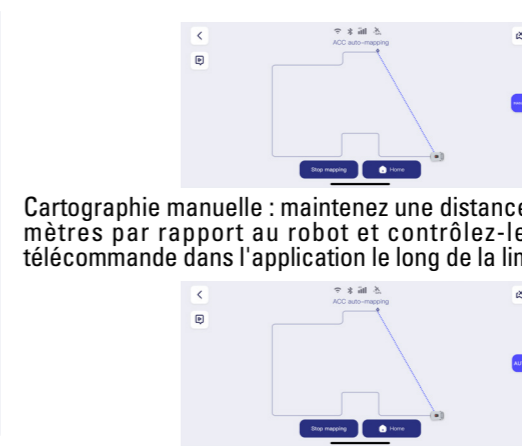


#### 2 Créer une carte

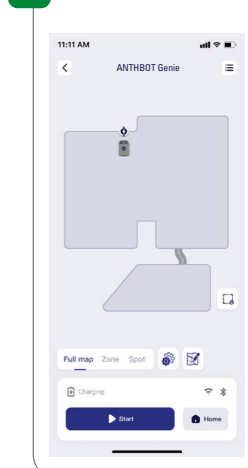


**Cartographie automatique :** ne prend en charge que les pelouses avec des limites claires et des zones fermées.

**Cartographie manuelle :** maintenez une distance maximale de 6 mètres par rapport au robot et contrôlez-le à l'aide de la télécommande dans l'application le long de la limite souhaitée.



#### 3 Démarrer le robot



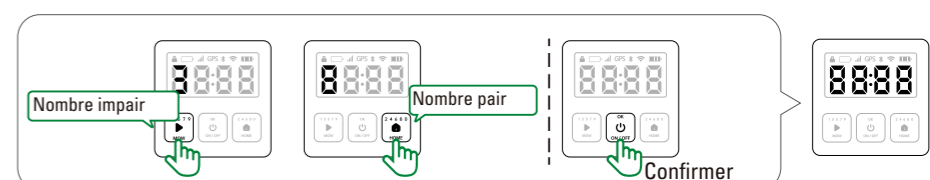
#### Avertissement:

1. Une carte doit être créée avant la tonte. La cartographie doit être lancée depuis la station.
2. Avant la tonte, assurez-vous que la LED de l'antenne RTK est verte et que le symbole GPS du robot est allumé.
3. Si la station de base RTK est inclinée ou déplacée après la création de la carte, celle-ci doit être recréée.
4. Définir les zones virtuelles interdites (par exemple pour les parterres de fleurs) avant la tonte.

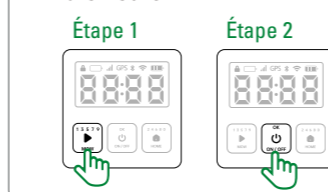
### Fonctionnement de la tondeuse

#### 🔓 Déverrouiller le robot

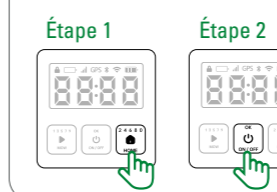
Entrez le code PIN à 4 chiffres pour déverrouiller le robot. Le code PIN par défaut est 0000. Appuyez quatre fois sur la touche OK pour confirmer.



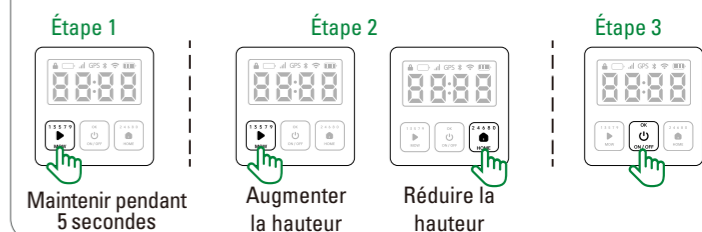
#### ▶ Démarrer la tonte globale



#### 🔄 Renvoyer le robot à la station de charge



#### ⚙️ Régler la hauteur de coupe



Roboter Top 2000  
Robot Top 2000  
Art.Nr. 25899.01/108769



Hotline: 0848 000 120

LANDI Schweiz AG  
Schulriederstrasse 5  
CH-3293 Dotzigen  
www.landli.ch

# Guida rapida

## Passo 1

### Video guida all'installazione

Scansionare il codice QR sulla destra e seguire le istruzioni video per l'installazione.



## Scarica l'APP ANTHBOT

L'applicazione ANTHBOT può essere scaricata dall'App Store o da Google Play. Scansiona il codice QR per scaricare e installare l'applicazione ANTHBOT. Una volta completato il download, apri l'applicazione e segui le istruzioni. Al primo accesso, dovrai creare un account. Nota: assicurati che la rete collegata al dispositivo funzioni sulla frequenza 2,4 GHz e che l'applicazione disponga dei diritti di accesso richiesti alla localizzazione e alla rete.

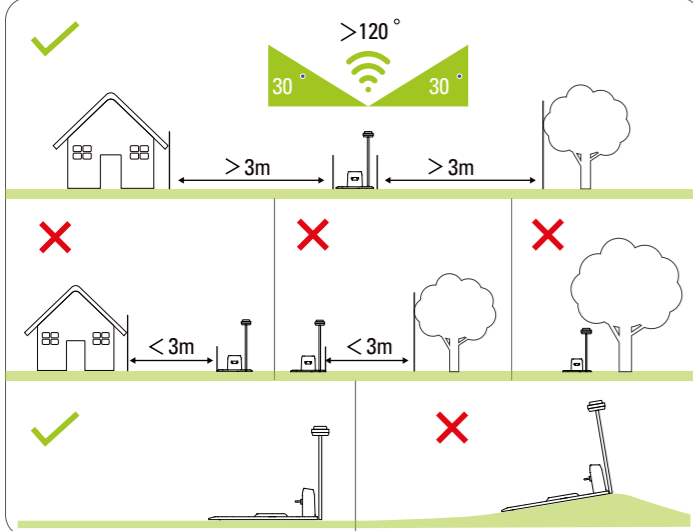


Scarica su **App Store**

GET IT ON **Google Play**

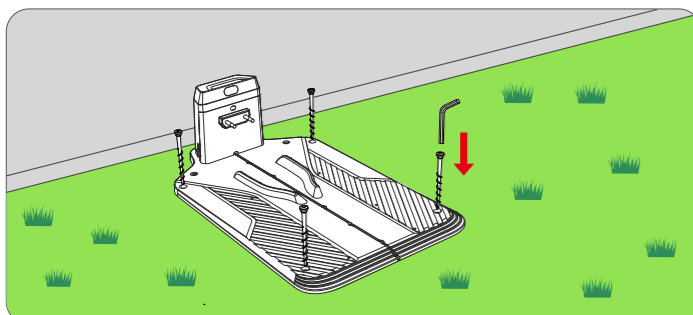
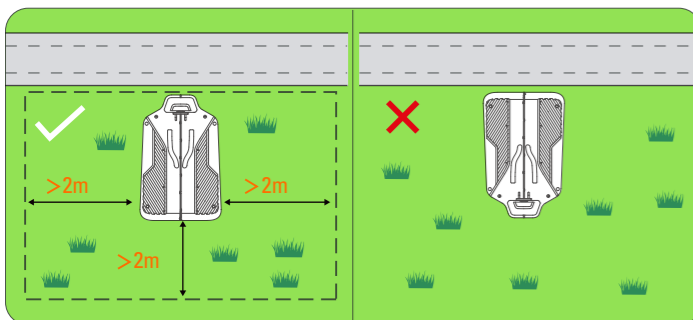
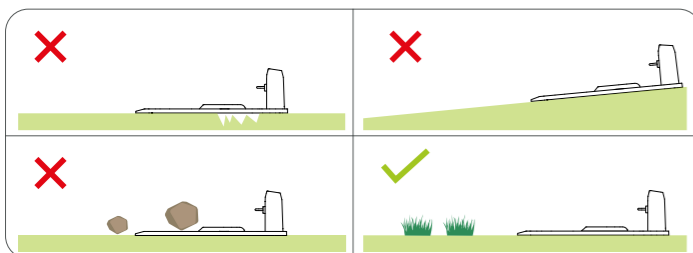
## Passo 2 Scegliere un sito

### 1 Luogo di installazione su una superficie



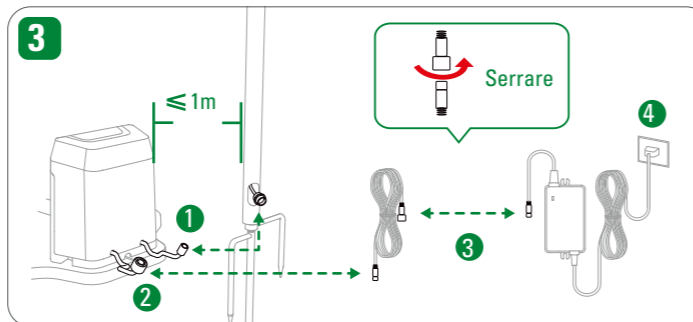
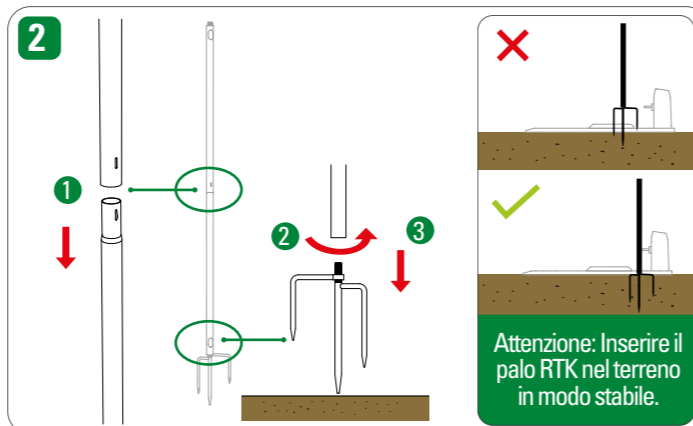
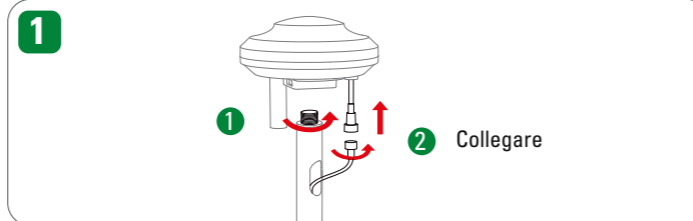
Attenzione: È necessario un segnale Wi-Fi potente nel luogo di installazione!

### 2 Installare la stazione



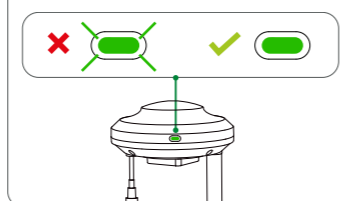
## Passo 3 Installazione

### Installazione e alimentazione

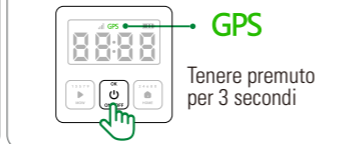


### Controllare la spia luminosa

Collegare una fonte di alimentazione temporanea, quindi verificare se il LED rimane acceso in modo permanente.



Roboter auf die Station stellen und einschalten. Wenn "GPS" auf dem Display konstant leuchtet, ist der Standort registriert. Die Registrierung kann ca. 3 Minuten andauern.

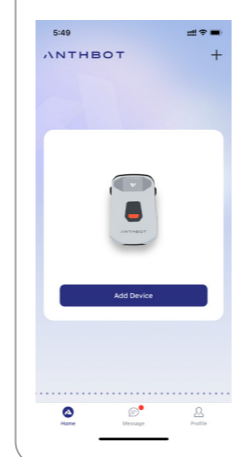


Attenzione: Se il LED non rimane acceso in modo permanente, la posizione non è adeguata oppure c'è un problema con l'alimentazione elettrica. Cercare una nuova posizione e, se necessario, controllare l'alimentazione elettrica.

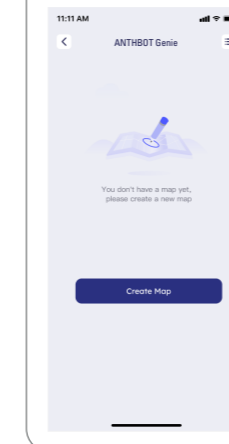
## Passo 4 Funzionamento

### Funzionamento della APP

#### 1 Aggiungi il robot



#### 2 Creare una mappa

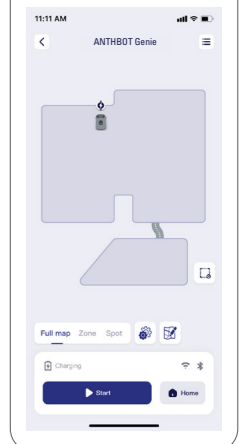


Mappatura automatica: supporta solo prati con confini chiari e aree chiuse.



Mappatura manuale: mantenete una distanza massima di 6 metri dal robot e controllatelo tramite il telecomando nell'app lungo il confine desiderato.

#### 3 Démarrer le robot



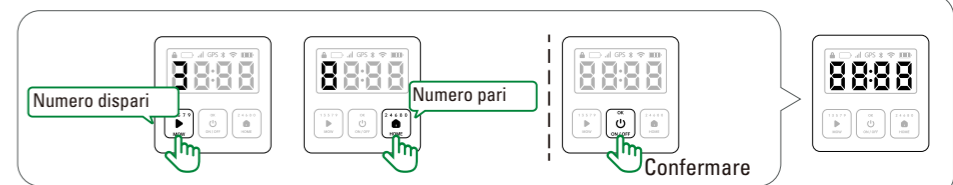
Attenzione:

1. Prima di procedere alla falciatura è necessario creare una mappa. La mappatura deve essere avviata dalla stazione.
2. Prima di falciare, assicurarsi che il LED dell'antenna RTK sia verde e che l'icona GPS del robot sia accesa.
3. Se la stazione base RTK viene inclinata o spostata dopo la creazione della mappa, è necessario ricreare la mappa.
4. Definire le aree virtuali vietate (ad es. per le aiuole) prima della falciatura.

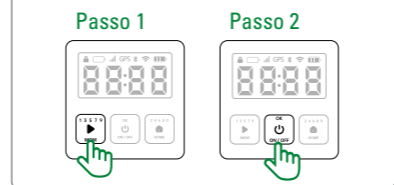
### Funzionamento del robot

#### Sbloccare il robot

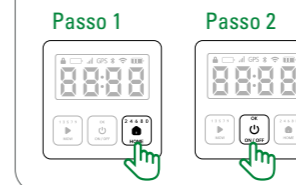
Inserire il codice PIN a 4 cifre per sbloccare il robot. Il codice PIN predefinito è 0000. Premere quattro volte il tasto OK per confermare.



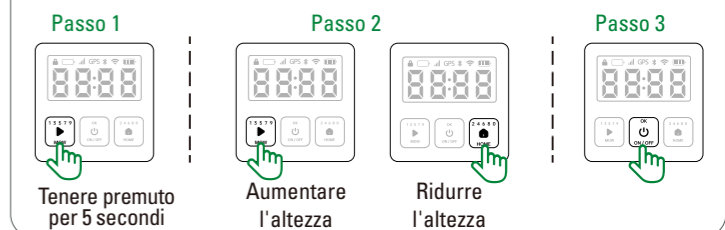
#### Avvio della falciatura complessiva



#### Ripartire il robot alla stazione di ricarica



#### Regolare l'altezza di taglio



Roboter Top 2000  
Robot Top 2000  
Art.Nr. 25899.01/108769



Hotline: 0848 000 120

LANDI Schweiz AG  
Schulriederstrasse 5  
CH-3293 Dotzigen  
www.landl.ch